



The Engineer's Choice

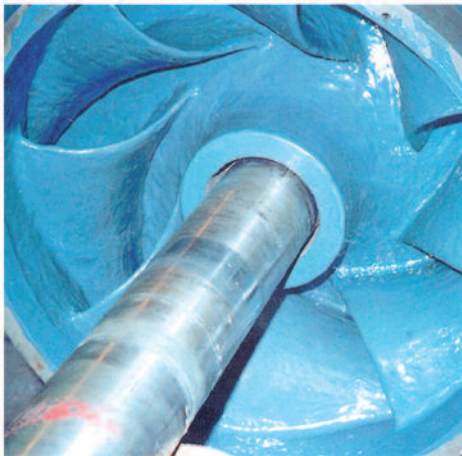
FOR HIGH PERFORMANCE ENGINEERING REPAIRS



Metal Repair



Elastomeric Repair



Ceramic Repair

**REPAIR
DON'T
REPLACE**



Metal Repair

ThistleBond has an extensive range of metal repair products which includes:

- Quick setting metal repair compounds
- Multi-purpose engineering grade metal repair systems
- Versatile metal rebuilding and resurfacing materials
- Fast setting pipe repair bandages
- Specialist engineers' repair kits

High performance engineering repair products for all types of equipment and components

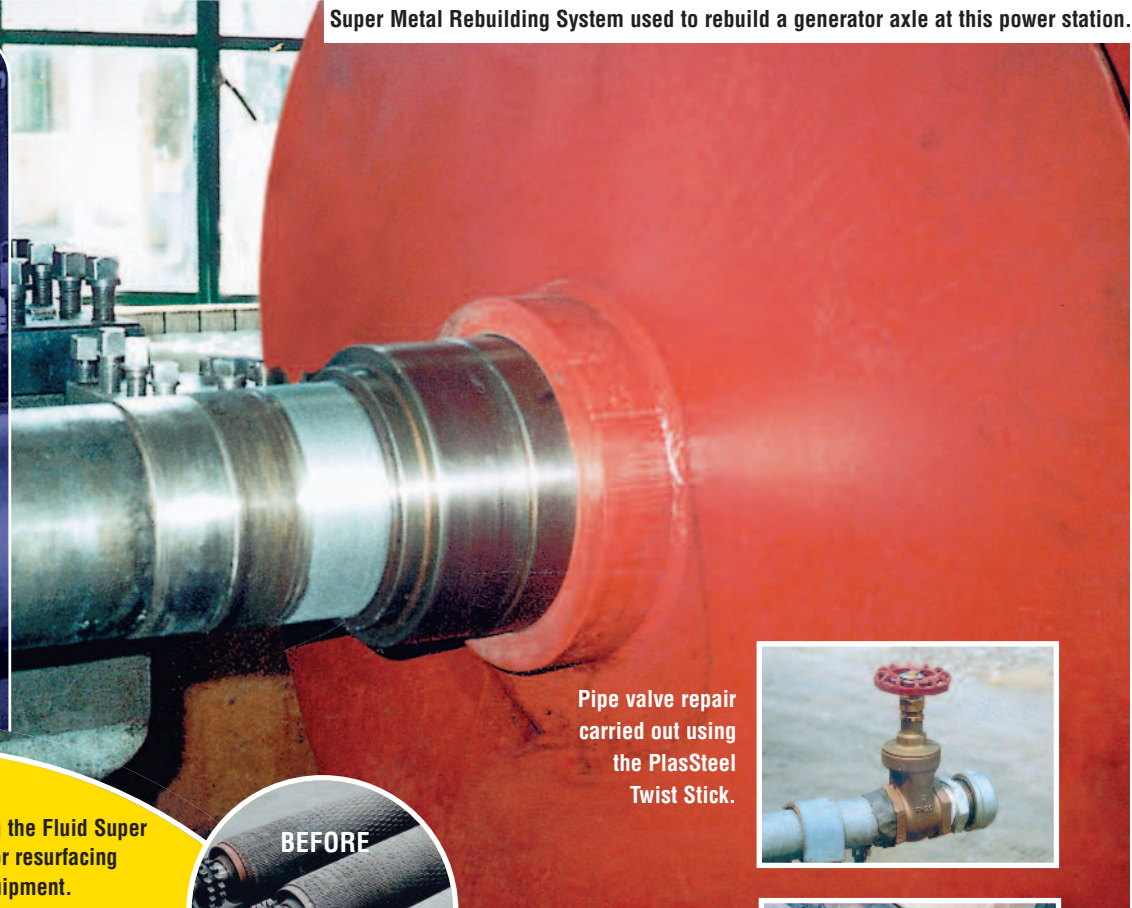
- Cracked and leaking pipes
- Tank seams
- Cracked batteries, engine blocks & casings
- Stripped threads
- Scored hydraulic rams
- Worn or damaged shafts, drive rollers and radiators
- Bearing housings & flange faces
- Pumps & valves

ThistleBond Super Metal Repair Products - Engineering repairs to last

- Simple, safe and easy-to-use
- Superior adhesion to metals, fibre glass and mineral surfaces
- Easily machined, drilled and sanded
- Ideal for emergency on-site repairs
- Fast setting repair products available
- No shrinkage during curing
- Resistant to a wide range of industrial chemicals
- Suitable for total permanent immersion

Super Metal Rebuilding System used to rebuild a generator axle at this power station.

ThistleBond Super Metal repair products have been developed using the most advanced polymer based technology available. These adaptable, cost-effective products are the ideal choice for engineering repairs on all types of mechanical equipment and machine components.



Brake test rollers refurbished using the Fluid Super Metal Resurfacing System. Ideal for resurfacing damaged metal machinery and equipment.



Pipe valve repair carried out using the PlasSteel Twist Stick.



Super Metal Rebuilding System used with ThistleBond Reinforcement Tape to repair pipework welds.



Tank seams repaired using the Extended Life Super Metal Rebuilding System.



Fast-setting, moisture cured ThistleWrap Pipe Repair Tape used to repair a leaking pipe.





Elastomeric Repair

ThistleBond boasts a wide range of flexible repair systems including:

- Durometer 60-80 grade elastomers
- Fast curing rubber repair compounds
- Paste and fluid grade systems
- Abrasion resistant products
- Moulding and casting systems
- High performance sealants & joint fillers

Our rubber repair systems offer the ideal solution, where repairs to rubber components are an ongoing requirement

- Conveyor belts
- Rubber rollers
- Gaskets & valves
- Off road tyres
- Rubber impellers
- Chutes & hoppers
- Rubber hoses
- Expansion joints

ThistleBond Elastomeric Repair Systems - The wise choice when performance matters

- Advanced solvent free elastomer technology
- Superior tensile & tear strength
- Excellent elongation
- Suitable for use on almost any surface
- Good resistance to a wide range of industrial chemicals
- No environmental pollution
- Food grade sealants available

As a result of an ongoing intensive research & development programme, ThistleBond can offer a versatile range of Elastomeric repair systems ideal for the protection of all flexible components.

'80' Durometer Paste Elastomer - An engineering grade flexible repair system.



Butterfly valve seam being reinstated using the '80' Durometer Fluid Elastomer.



'60' Durometer Rapid Paste Elastomer used to carry out an instant repair on a conveyor belt at this log mill, which was back in service within 30 minutes.



'80' Durometer Fluid Elastomer used to reconstruct the worn seam of a slurry pump.



Front end loader tyre repaired using the '60' Durometer Paste Elastomer.



Ceramic Repair

The **ThistleBond** range of polyceramic resurfacing systems includes:

- Heavy duty erosion/corrosion repair systems
- Fluid grade protection systems
- Abrasion resistant coatings
- High temperature resurfacing systems
- Smooth, low friction coatings
- Cavitation resistant compounds
- Potable water approved coatings

Durable protection against erosion and corrosion damage in fluid flow environments

- Pumps and valves
- Condenser tube sheets
- Heat exchangers
- Pipes, chutes & hoppers
- Impellers and propellers
- Tanks and valves
- Bow thrusters, kort nozzles & rudders
- Water boxes

ThistleBond Ceramic Carbide Repair Systems - Reducing downtime, saving money

- No sagging or slumping during application
- WRC and DWI approved
- Excellent adhesion to metal surfaces
- Outstanding impact & abrasion resistance
- Multi-purpose repair capability
- Unaffected by most industrial chemicals
- Good low temperature cure properties

Solvent free resurfacing & lining system for fluid flow environments.

ThistleBond Ceramic Carbide repair systems are the finest compounds for rebuilding and resurfacing components and equipment operating in the most aggressive industrial environments, which are subject to erosion and corrosion damage.



High Temperature Ceramic Carbide Compound used to resurface a gate valve. Ideal for resurfacing components operating in high temperature service conditions.



Heat exchanger tube sheets refurbished using the Super Low Friction Efficiency Coating.



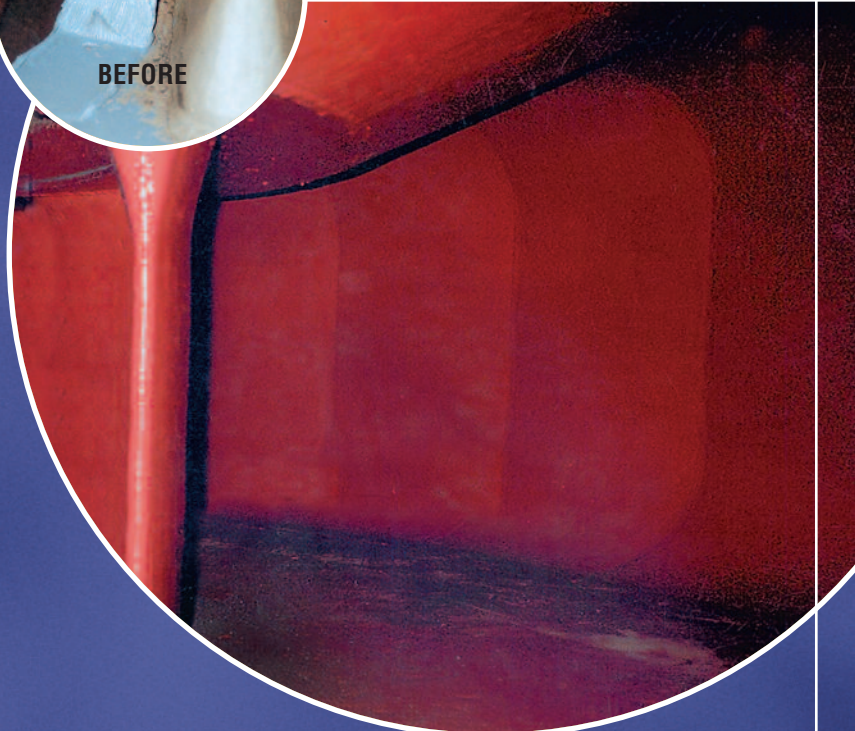
Abrasion Resistant Ceramic Carbide Fluid used to resurface a pump component.



Pump body being rebuilt using the Heavy Duty Ceramic Carbide Compound.



Multi-purpose Ceramic Carbide Wearing Compound used to repair eroded areas of a cold water pump at this coal-fired power station. Pump lining reinstated using the Super Low Friction Efficiency Coating.





The Engineer's Choice

ThistleBond engineering repair and maintenance products are based on the very latest polymer technology.

ThistleBond products are safe, easy-to-use and due to their simple packaging and indefinite storage life, they can be used anytime, anywhere to rebuild and repair worn or damaged machinery and equipment operating in aggressive industrial environments.

Numerous independent tests have shown that the ThistleBond products in this range have no equal anywhere in the world.

Through our international network of agents and distributors, we are able to offer instant, on the spot advice for any engineering repair or maintenance problem - without obligation.

This advice comprises information on mechanical strengths, chemical resistance, recommended surface preparation and full working system recommendations.

Our aim is to provide ThistleBond customers with a range of engineering repair and maintenance products, which are cost-effective, environmentally friendly and offer outstanding performance.

“Committed to research and development, product excellence and customer care”

Metal Repair

Elastomeric Repair

Ceramic Repair

The products highlighted in this brochure are just part of the ThistleBond industrial and marine maintenance range.

The full range includes:

- Super Metal Repair Systems
- Ceramic Carbide Repair Systems
- Elastomeric Repair Systems
- Roof Repair/Resurfacing Systems
- Adhesives
- Laminates
- Topside & Below Waterline Repair Systems

- Concrete Repair Systems
- Safety Surfacing Systems
- Chemical Protection Systems
- Corrosion Protection Systems



Unique Polymer Systems Ltd
ThistleBond Division
Unit 1 Bankside Industrial Estate
Little Marcle Road
Herefordshire HR8 2DR ENGLAND
Tel: +44 (0) 1531 63 63 00
Mail: sales@thistlebond.info
Web: www.uniquepolymersystems.com

**REPAIR
DON'T
REPLACE**

“Committed to research and development, product excellence and customer care”